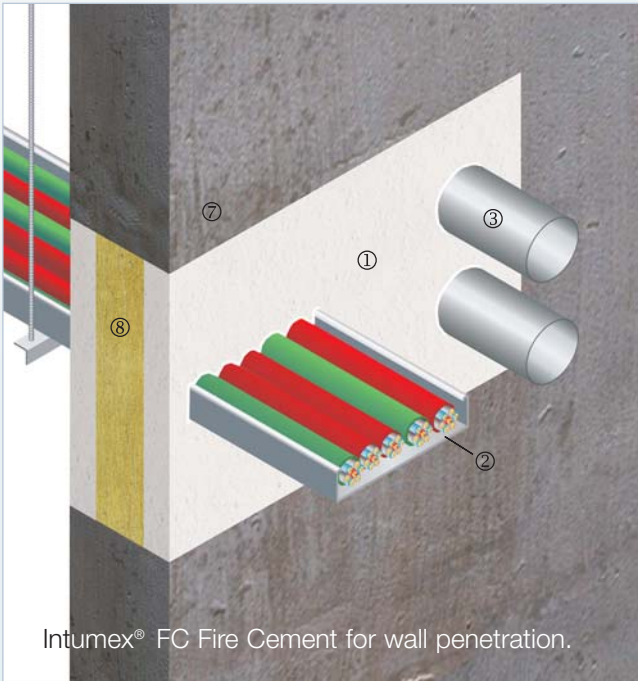
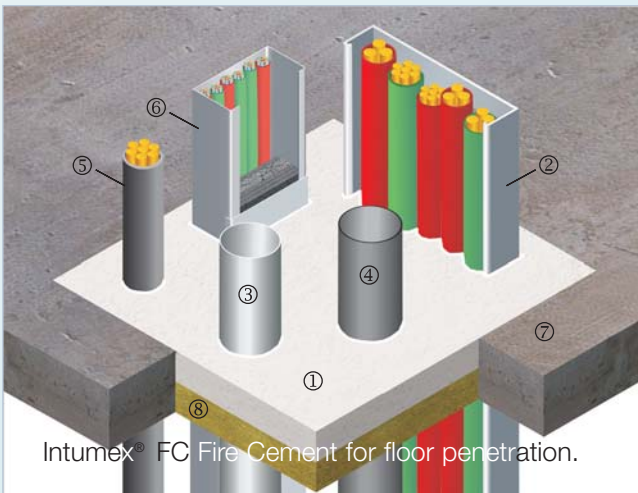




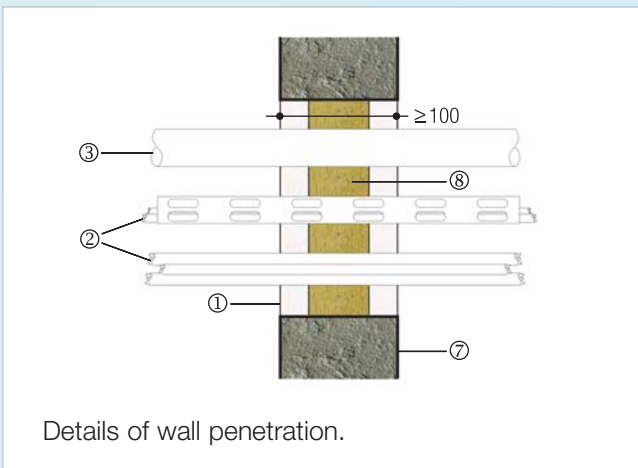
Intumex[®] FC - Applications



Intumex[®] FC Fire Cement for wall penetration.



Intumex[®] FC Fire Cement for floor penetration.



Details of wall penetration.

Intumex[®] FC penetration seals

- ① Intumex[®] FC Fire Cement

Wall penetration

For FRL -240/180 use 25mm Intumex[®] FC +
50mm x 140kg mineral wool +
25mm cement

For FRL -/240/240 use 50mm of Intumex[®] FC
50mm x 140kg mineral wool +
50mm cement

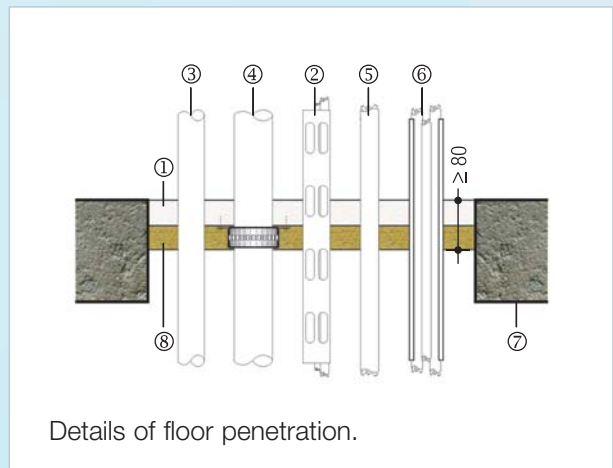
Floor penetration

For various FRLs use Intumex[®] FC (per table below) +
50mm x 120kg mineral wool

FRL	1 hour	2 hours	3 hours	4 hours
Thickness	30mm	30mm	40mm	40mm

- ② Electric cables and cable trays
- ③ Metal pipe
- ④ Plastic pipe with Intumex[®] UC Fire Protection Collar mounted flush with underside of mineral wool
- ⑤ Armoured cable
- ⑥ Cable trunking and cables with Intumex[®] SJ Electrical Junction Seal
- ⑦ Wall element or floor slab
- ⑧ Mineral wool as in ①

NOTE: A series of tests have been performed on installation samples of the Intumex[®] Cement in order to ascertain its loadbearing capacity when used in a thickness of 100mm, 70mm and 50mm within an aperture of 1000mm x 600mm. These tests show that within certain parameters the construction can be deemed as being load bearing. Please note that the load bearing capacity is determined by a combination of factors, including but not exclusive to, the following. Dimensions of opening, thickness of Intumex cement, overall percentage of surface area filled by services, types of services passing through the cement. If load bearing capability is a requirement for any particular installation, please consult your local Intumex office with full details of your requirements.



Details of floor penetration.